

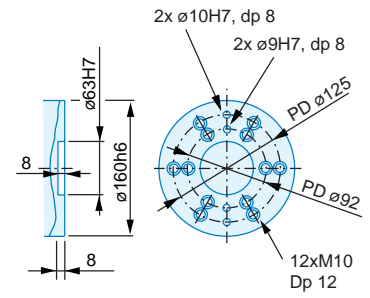
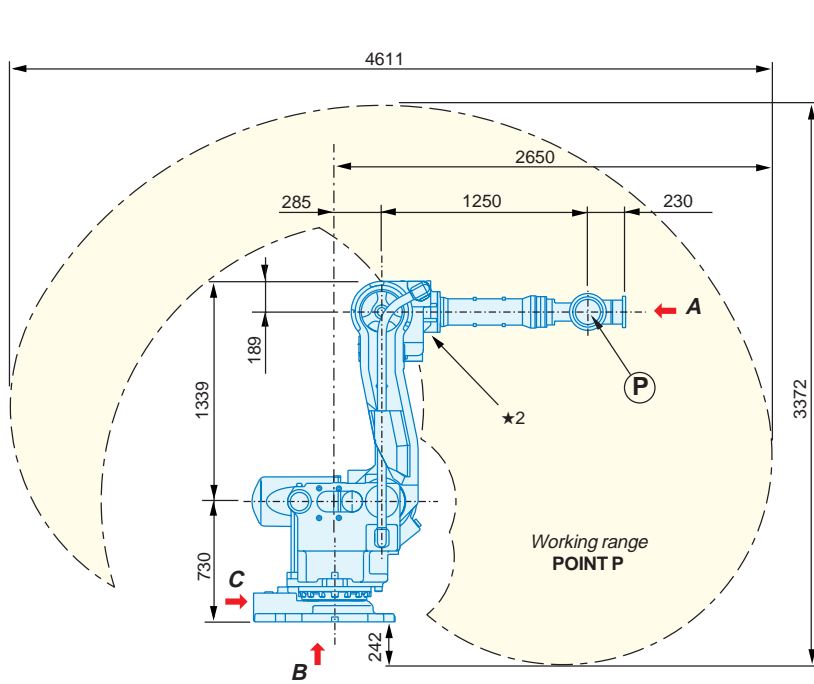
Industrial Robot

MOTOMAN-UP165

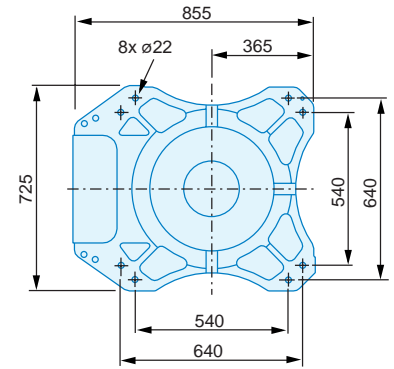


Suitable applications

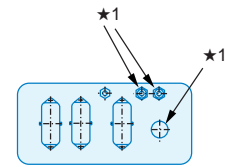
- *Handling*
- *Assembling*
- *Packaging/Palletising*
- *Grinding/Polishing*
- *Gluing/Sealing*
- *Cutting/Deburring*
- *Spraying/Painting*
- *Machine tending*
- *Spot welding*



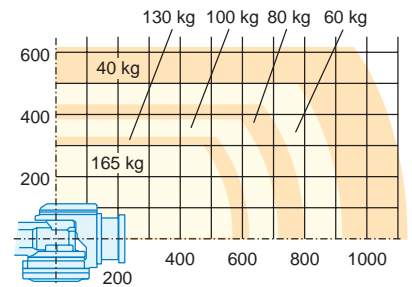
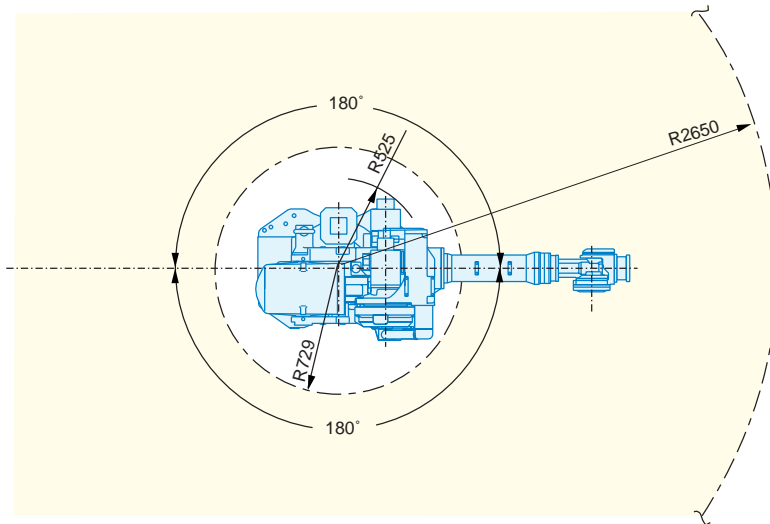
View A



View B



View C



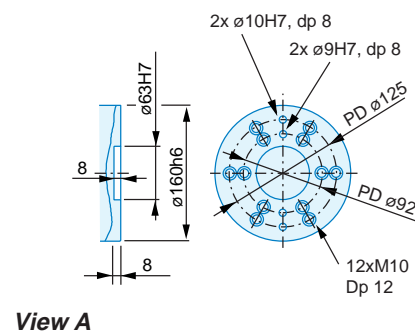
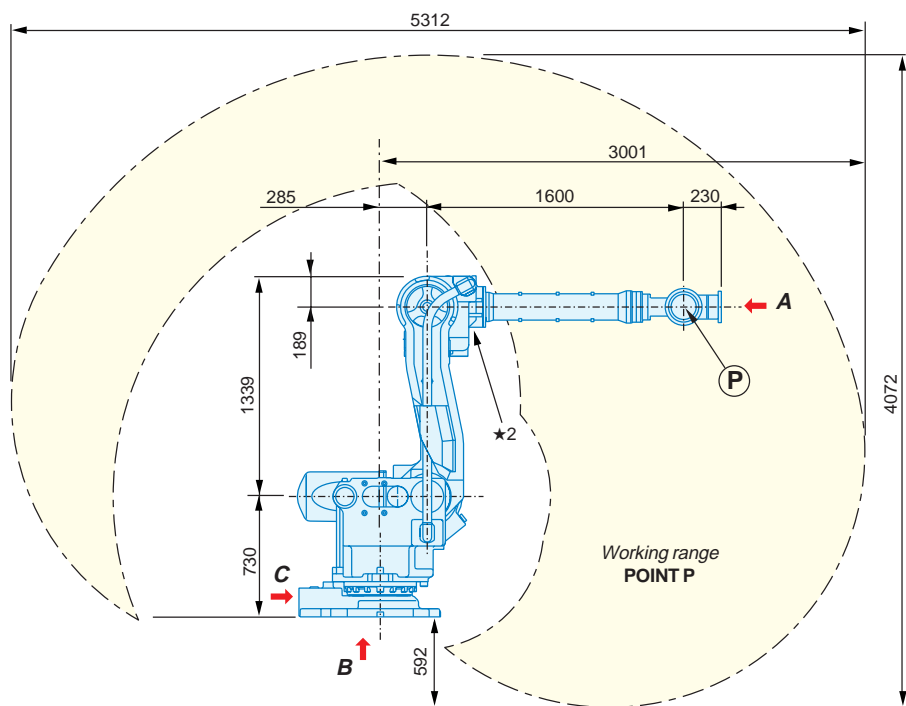
★	Air duct connector	Signal connector
1	2x PT 3/8, tap	23 wires + PE
2	2x PT 3/8, tap	23 wires + PE

Specifications

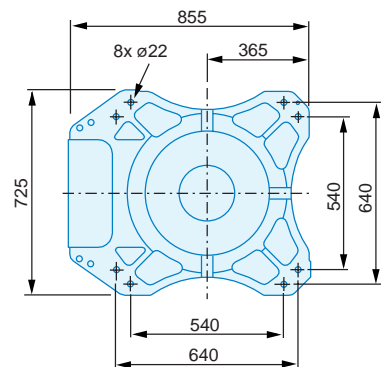
Controlled axes	6	
Payload	165 kg	
Repetitive positioning accuracy	±0.2 mm	
Motion range	S-axis (turning)	±180°
	L-axis (lower arm)	+76°, -60°
	U-axis (upper arm)	+240°, -130°
	R-axis (wrist roll)	±360°
	B-axis (wrist pitch)	±130°
Maximum speed	T-axis (wrist twist)	±360°
	S-axis	110°/s
	L-axis	110°/s
	U-axis	110°/s
	R-axis	175°/s
	B-axis	145°/s
	T-axis	240°/s

Weight	1300 kg	
Power supply	7.5 kVA	
Allowable moment	R-axis	883 Nm (90 kgf•m)
	B-axis	883 Nm (90 kgf•m)
	T-axis	490 Nm (50 kgf•m)
Allowable inertia	R-axis	51.25 kg•m ²
	B-axis	51.25 kg•m ²
	T-axis	15 kg•m ²
Ambient conditions	Temperature	0 to 45°C
	Rel. humidity	20 to 80% RH
	Vibration	0.5G or less
Others	<ul style="list-style-type: none"> • IP65 (wrist unit) • Free from corrosive gas or liquid, or explosive gas. • Free from excessive electrical noise. 	

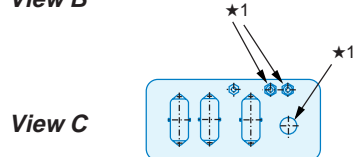
MOTOMAN-UP165-100



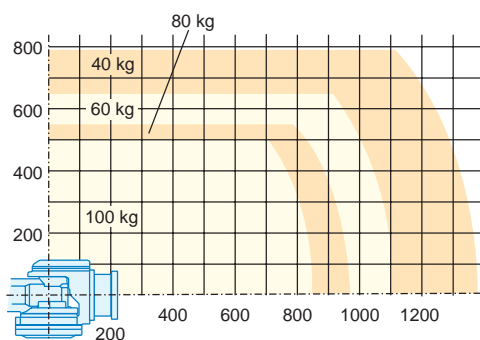
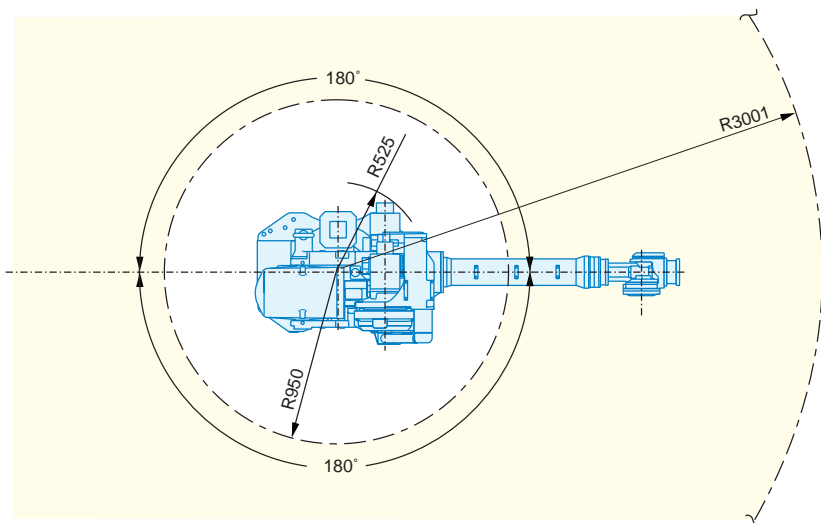
View A



View B



View C



★	Air duct connector	Signal connector
1	2x PT 3/8, tap	23 wires + PE
2	2x PT 3/8, tap	23 wires + PE

Specifications

Controlled axes	6	
Payload	100 kg	
Repetitive positioning accuracy	±0.3 mm	
Motion range	S-axis (turning)	±180°
	L-axis (lower arm)	+76°, -60°
	U-axis (upper arm)	+240°, -130°
	R-axis (wrist roll)	±360°
	B-axis (wrist pitch)	±130°
Maximum speed	T-axis (wrist twist)	±360°
	S-axis	110°/s
	L-axis	110°/s
	U-axis	110°/s
	R-axis	175°/s
	B-axis	145°/s
	T-axis	240°/s

Weight	1325 kg	
Power supply	7.5 kVA	
Allowable moment	R-axis	833 Nm (85 kgf•m)
	B-axis	833 Nm (85 kgf•m)
	T-axis	490 Nm (50 kgf•m)
Allowable inertia	R-axis	75 kg•m ²
	B-axis	75 kg•m ²
	T-axis	25 kg•m ²
Ambient conditions	Temperature	0 to 45°C
	Rel. humidity	20 to 80% RH
	Vibration	0.5G or less
Others	<ul style="list-style-type: none"> • IP65 (wrist unit) • Free from corrosive gas or liquid, or explosive gas. • Free from excessive electrical noise. 	



MOTOMAN ROBOTICS EUROPE AB

a YASKAWA company

Box 504 • SE-385 25 Torsås • Sweden
 Tel: +46-486-48800 • Fax: +46-486-41410
 www.motoman.se

Group Companies: **France:** MOTOMAN Robotics, Nantes +33-2-40131919, **Germany:** MOTOMAN Robotec, Allershausen +49-8166-90-0 • MOTOMAN Robotec, Frankfurt +49-6173-6077-30, **Great Britain:** MOTOMAN Robotics, Banbury +44-1295-272755, **Italy:** MOTOMAN Robotics, Modena +39-059-280496, **Netherlands:** MOTOMAN Benelux, Breda +31-76-5424278, **Slovenia:** RISTRO, Ribnica +386-61-861113, **Spain:** MOTOMAN Robotics, Barcelona +34-93-6303478, **Sweden:** MOTOMAN Robotics Europe, Torsås +46-486-48800 • MOTOMAN Mecatron Robotic Systems, Kalmar +46-480-444600

Distributors: **Czech Republic:** MGM Spol, Tabor +420-361-254571, **Denmark:** HN-Automatic Robia, Vejle +45-79428000, **Finland:** Robia Suomi, Turku +358-22145600, **Greece:** Kouvalias Industrial Robots, Kallithea +30-1-95892436, **Norway:** Robia, Drammen +47-32217830, **Portugal:** Electro-Arco, Amadora +351-14968160, **Switzerland:** Geiger Handling, Schwarzenburg +41-31-7343111 • Messer SAG, Dällikon +41-18471717